



related

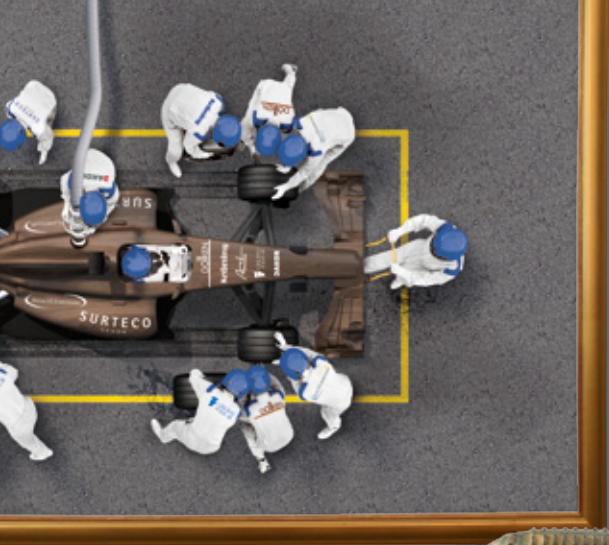
TRENDS 2015 / 2016

ONE STOP DESIGN SOLUTIONS

Designkompetenz aus einer Hand: Dafür steht SURTECO. Wir beobachten kontinuierlich soziale, kulturelle und gestalterische Strömungen und definieren daraus unsere Trendaussage. Und wir bieten Ihnen perfekt aufeinander abgestimmte Dekore in höchster Qualität – von der Fläche bis zur Kante, auf dem Boden und an der Wand.

Design expertise from a single source: this is what SURTECO represents. We continuously monitor social, cultural and design crazes and use these to determine our trend statements. And we offer you perfect colour coordination of the highest quality – across the surface to the edge, on the floor and on the wall.





related *to be*

Alles ist in Bewegung. Gegensätze lösen sich auf, vermischen sich und erschaffen Neues, Einzigartiges. Zeitlose Materialien werden mit funktionaler Technik kombiniert, natürliche Elemente verschmelzen mit puristischen, Bekanntes lebt in anderen Kontexten neu auf. Wir nennen diesen Trend „ONE“.

In seinen beiden Ausprägungen „related“ und „to be“ verbinden sich Tradition und Moderne auf verschiedene Art und Weise. Dabei entsteht etwas Besonderes. Etwas, das unsere Seele berührt und unsere Sinne verführt.

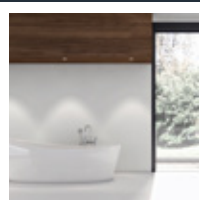
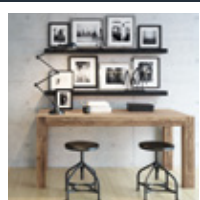
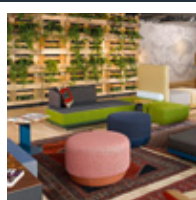
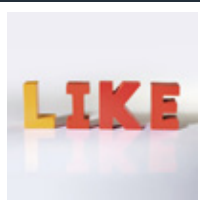
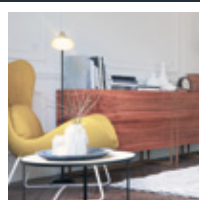
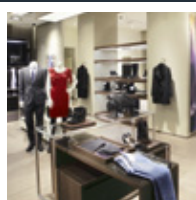
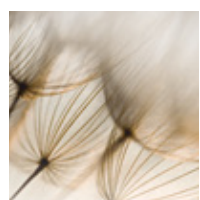
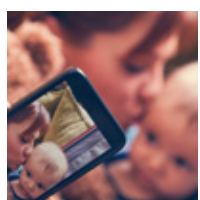
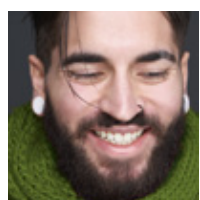
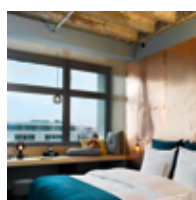
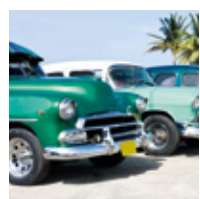
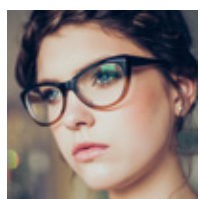


ONE

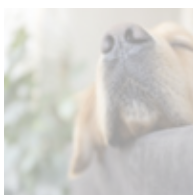
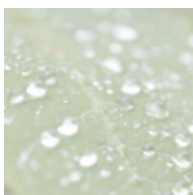
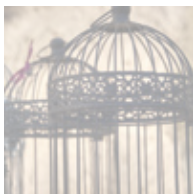
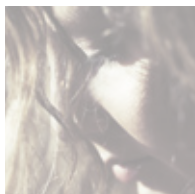
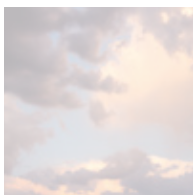
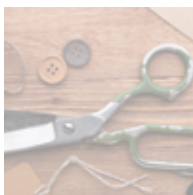
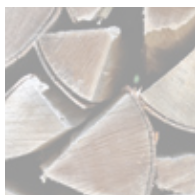
Everything is in motion. Opposites attract, interfuse and create new and unique effects. Timeless materials are combined with functional technology, natural and purist elements blend together and the familiar is newly revived in different contexts. We call this trend 'ONE'. In both of its versions 'related'

and 'to be', tradition and modernity are interfused in multifaceted ways – to create something very special. Something that touches our souls and captivates our senses.

related



to be



TREND:

rela

Die funktionale und individuelle Inszenierung der eigenen Wohnwelt prägt den Trend „related“. Smartphones verbinden Menschen in Echtzeit, Gruppenzugehörigkeit ist wichtig, Internet-Bewertungen bestimmen, was gut und richtig ist. In der Farbwelt finden sich viele metallene Töne, die teils knallige Akzente setzen.

Mitten in diesem schnellen Leben wächst die Sehnsucht nach Altvertrautem. Dunkle Hölzer, Marmor und klassische Elemente wecken wohlige Erinnerungen. Retro-Chic trifft auf Industrie-Look. Aus dem Bedürfnis nach Nachhaltigkeit entstehen neue Materialien.

ted

The trend 'related' is shaped by the functional and individual design of room layouts in homes. Smartphones connect people in real time, being part of a group is important and internet ratings determine what is good and right. The colour scheme includes multiple metallic shades, some of which create vivid and striking accents.

In the midst of this fast-paced life is a growing desire for the familiar and trusted. Dark wood, marble and classic elements arouse pleasant memories. Retro-chic meets industrial look. New materials are created from the need for sustainability.


Connected



The background of the entire image is a close-up, vertical view of a dark brown wood grain. The grain is characterized by fine, vertical lines and a prominent knot in the lower-left quadrant. The lighting is slightly uneven, creating subtle gradients of brown and tan across the surface.

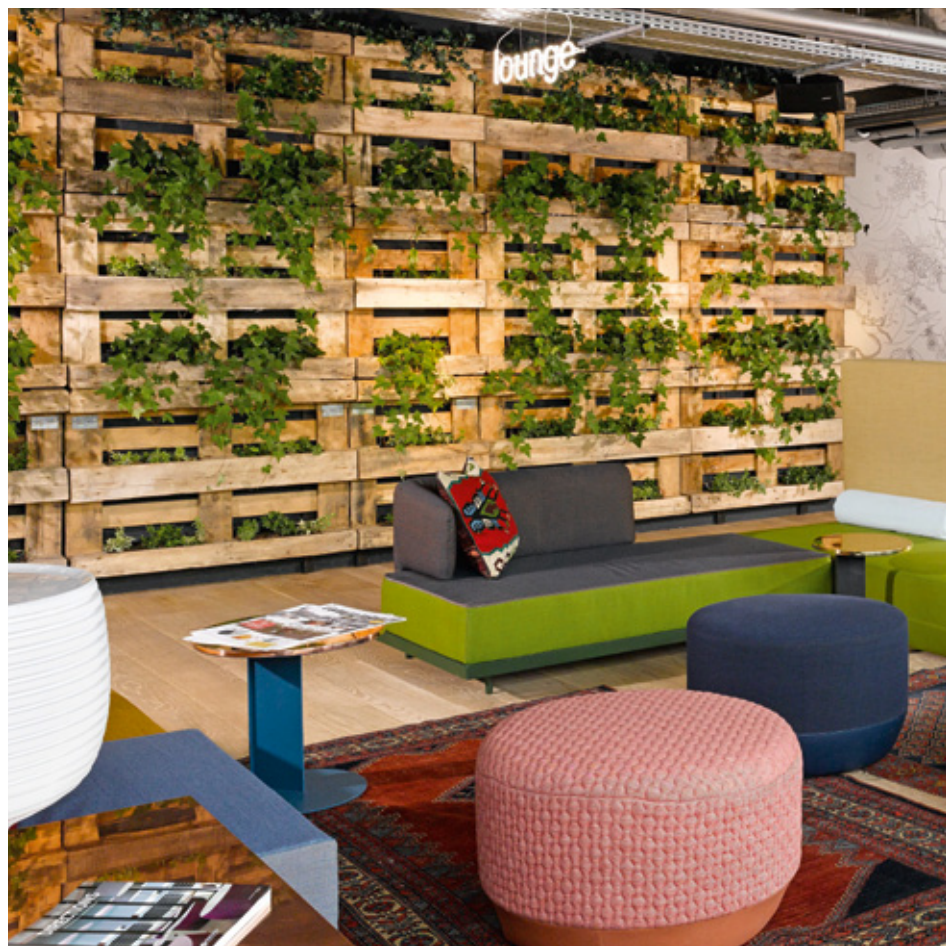
rēmīx

Noce Rinaldi

The background of the entire image is a close-up, vertical view of a wood grain. The grain is dark brown with lighter, wavy patterns, characteristic of a hardwood like walnut. The texture is smooth and natural.

Nussbaum Lumumba


urban jungle





Next Nature



The background of the entire image is a close-up, vertical view of a light brown wood grain. The grain patterns are vertical and show natural, wavy textures with varying shades of tan and beige. The lighting is even, highlighting the natural grain of the wood.

Nussbaum Chanel

for ever sense

The background of the entire image is a close-up, vertical view of a wood grain. The wood has a warm, medium-brown tone with prominent vertical grain patterns and some darker, wavy lines. The texture is natural and organic.

déjà vu

Noce Ampère



Wild Coral



must-have

Leander Mobile

life sharing

Akazie Curtis

LIKE





cross culture

Keanu

The background of the entire image is a close-up of a marble surface. It features a complex pattern of veins in shades of light blue, grey, and brown, set against a base color of off-white or light beige. The veins are irregular and organic in shape, creating a classic marble aesthetic.

neo classic

Marmo Romeo





say hello again

Samara Elm

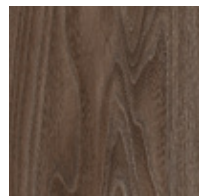
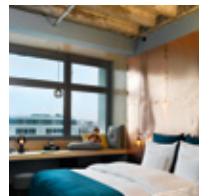
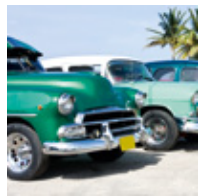
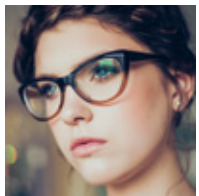
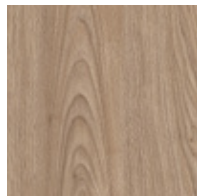
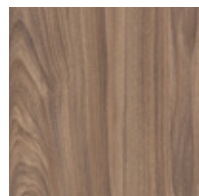
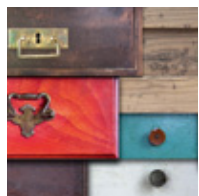
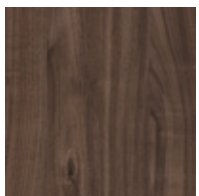
industrial spirit

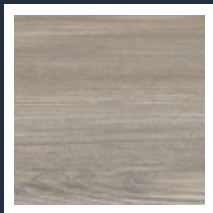
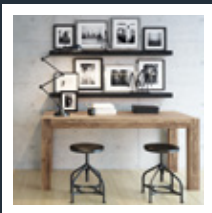
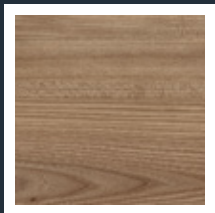
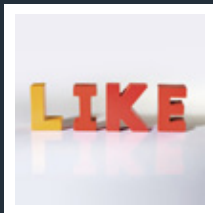
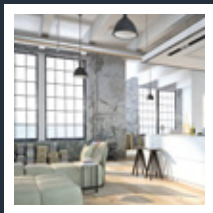
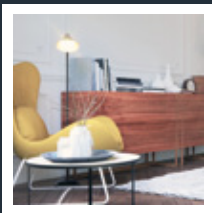
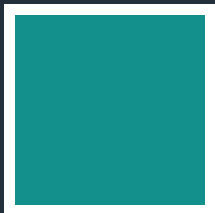
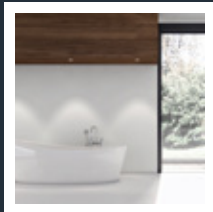
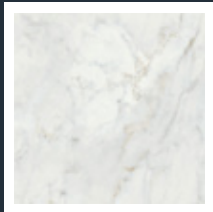
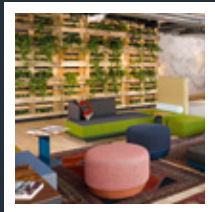
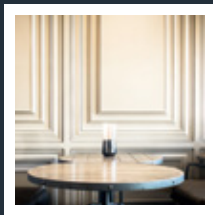
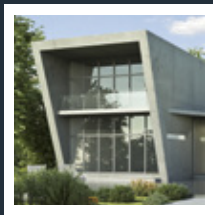
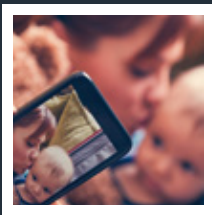
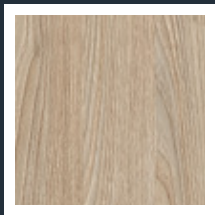
Gershwin



Marakesch

related





A close-up photograph of a light-colored wood grain, showing natural patterns and textures. The wood grain runs vertically, with some wavy, organic shapes in the center.

see you

www.surteco-decor.com

SURTECO
DECOR